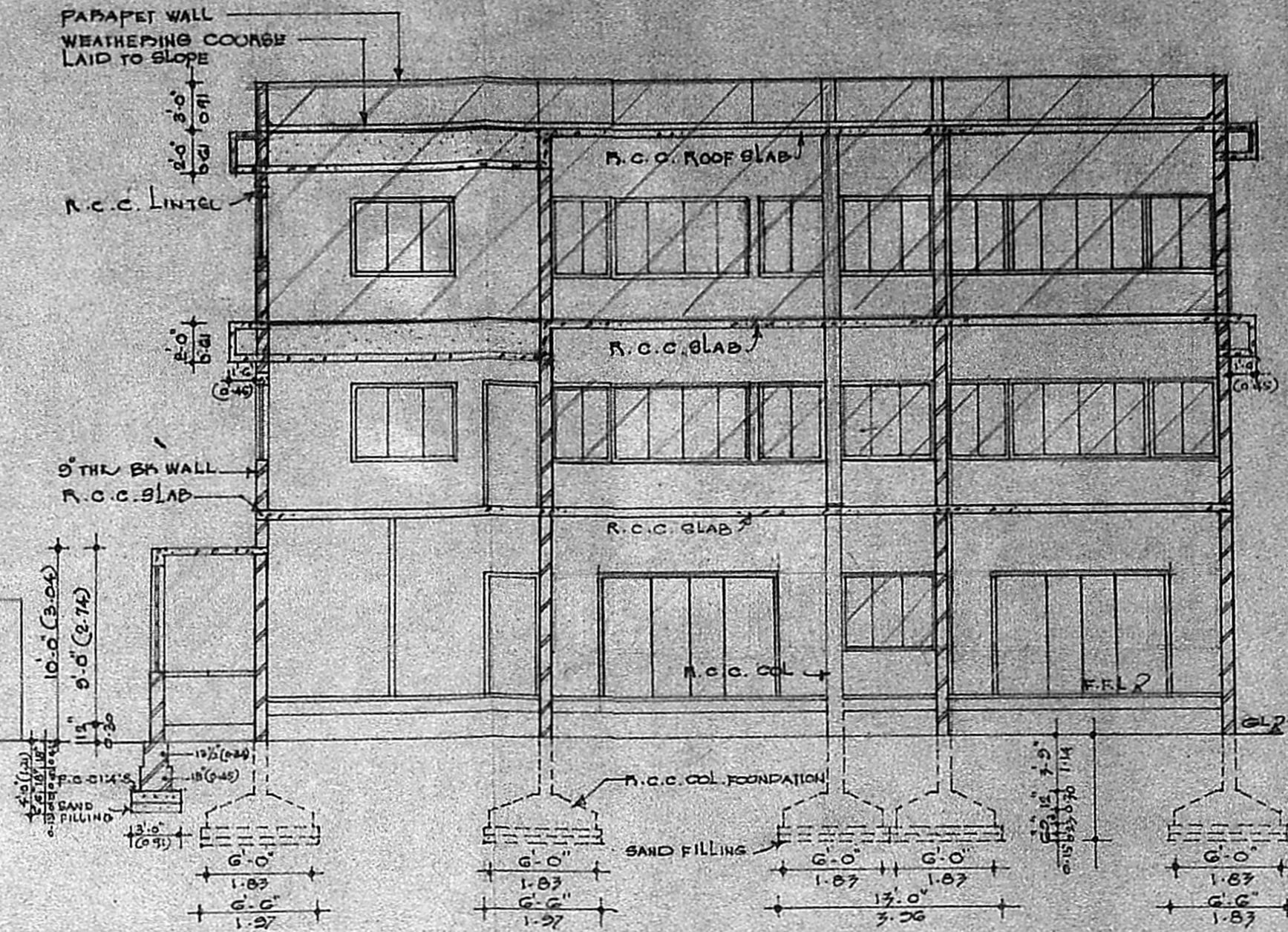
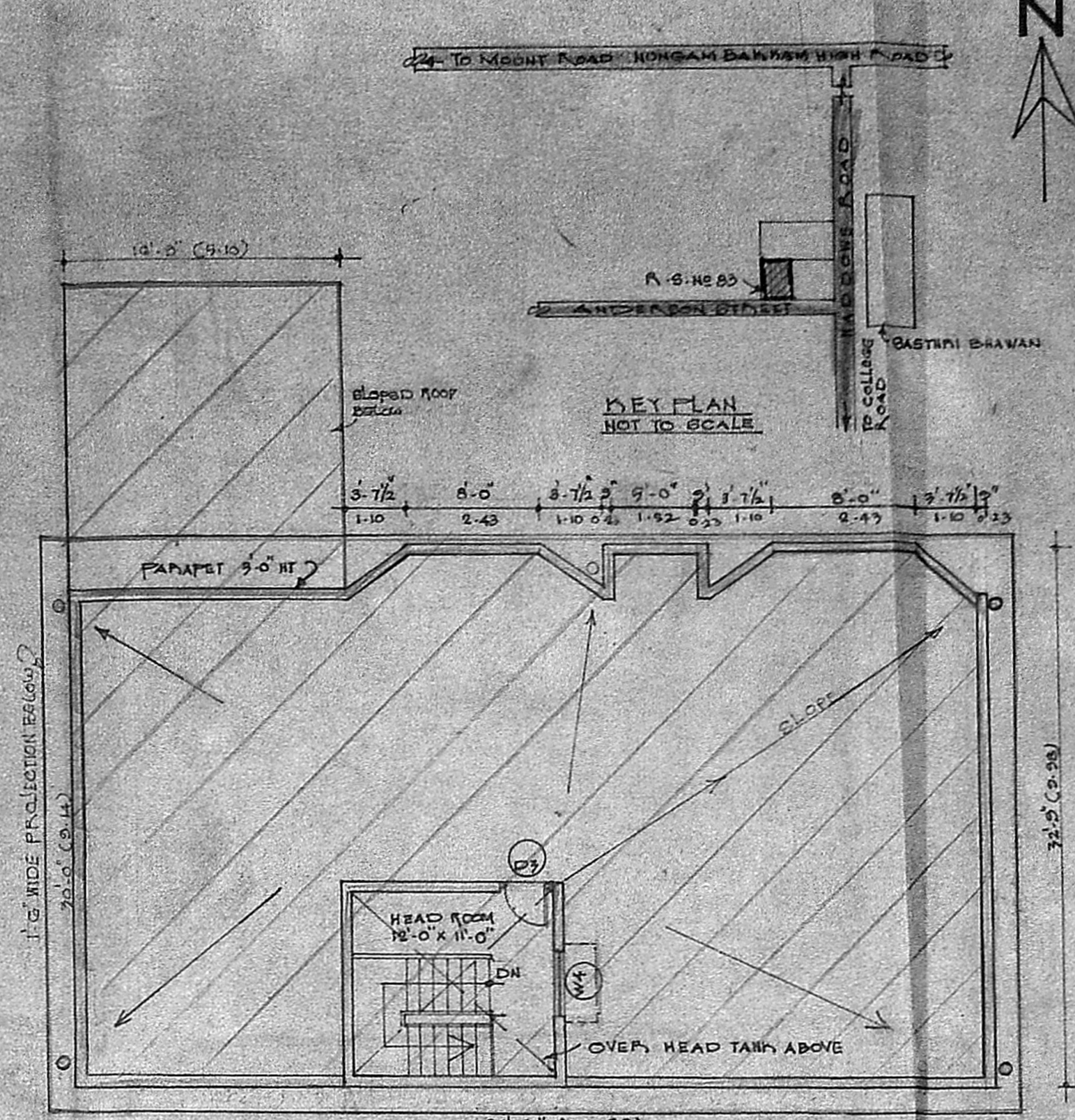


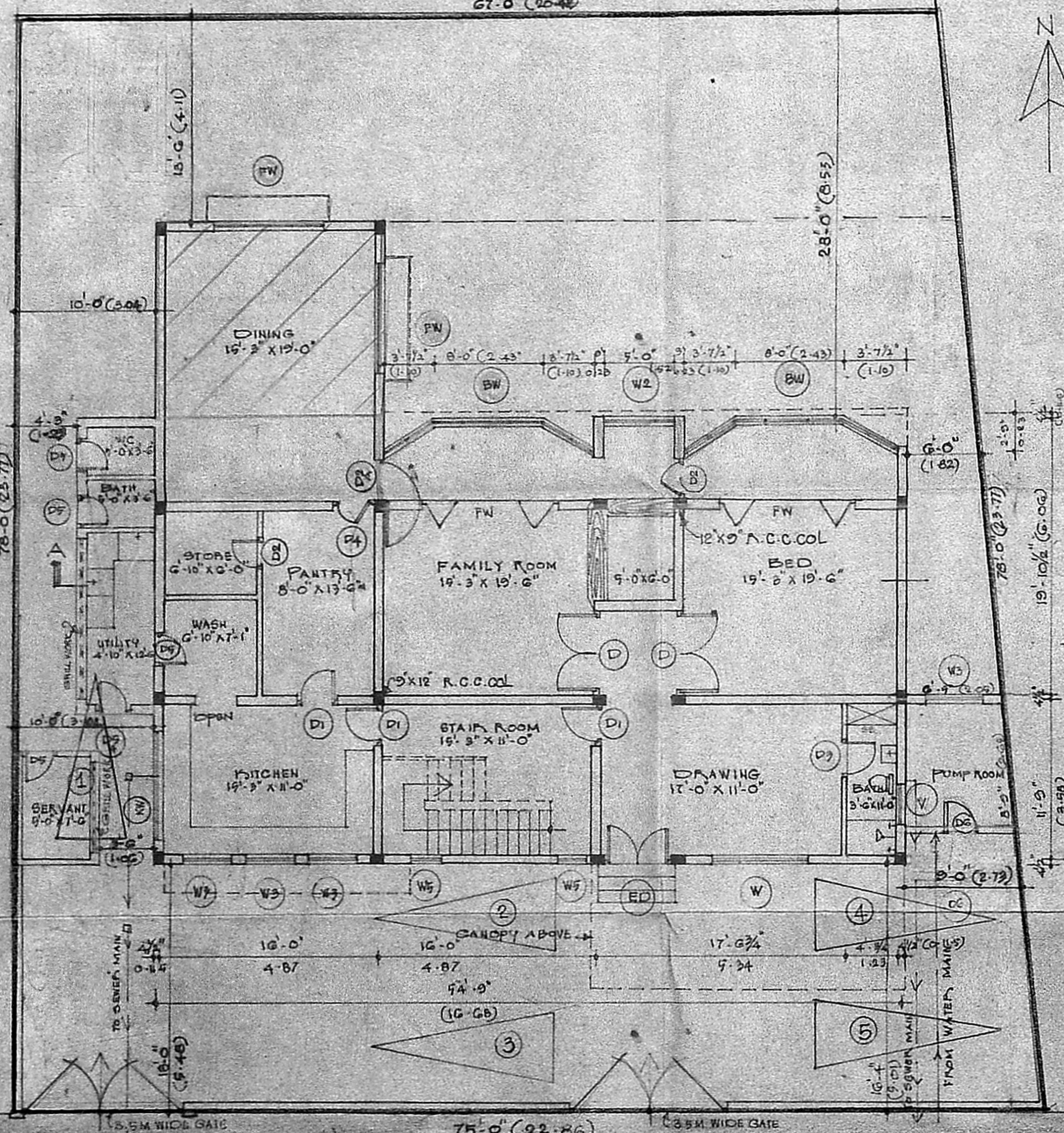
FRONT ELEVATION



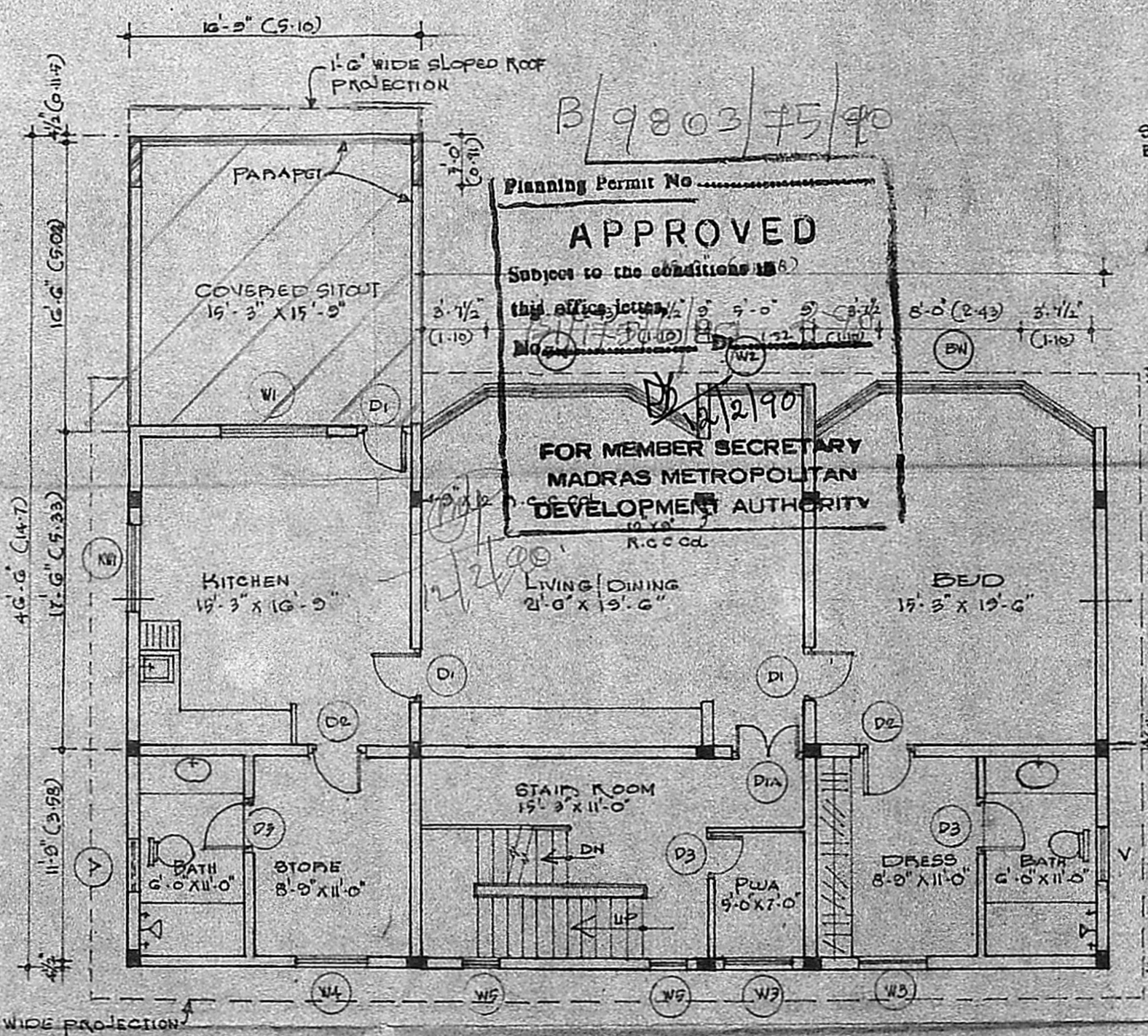
SECTION A-A



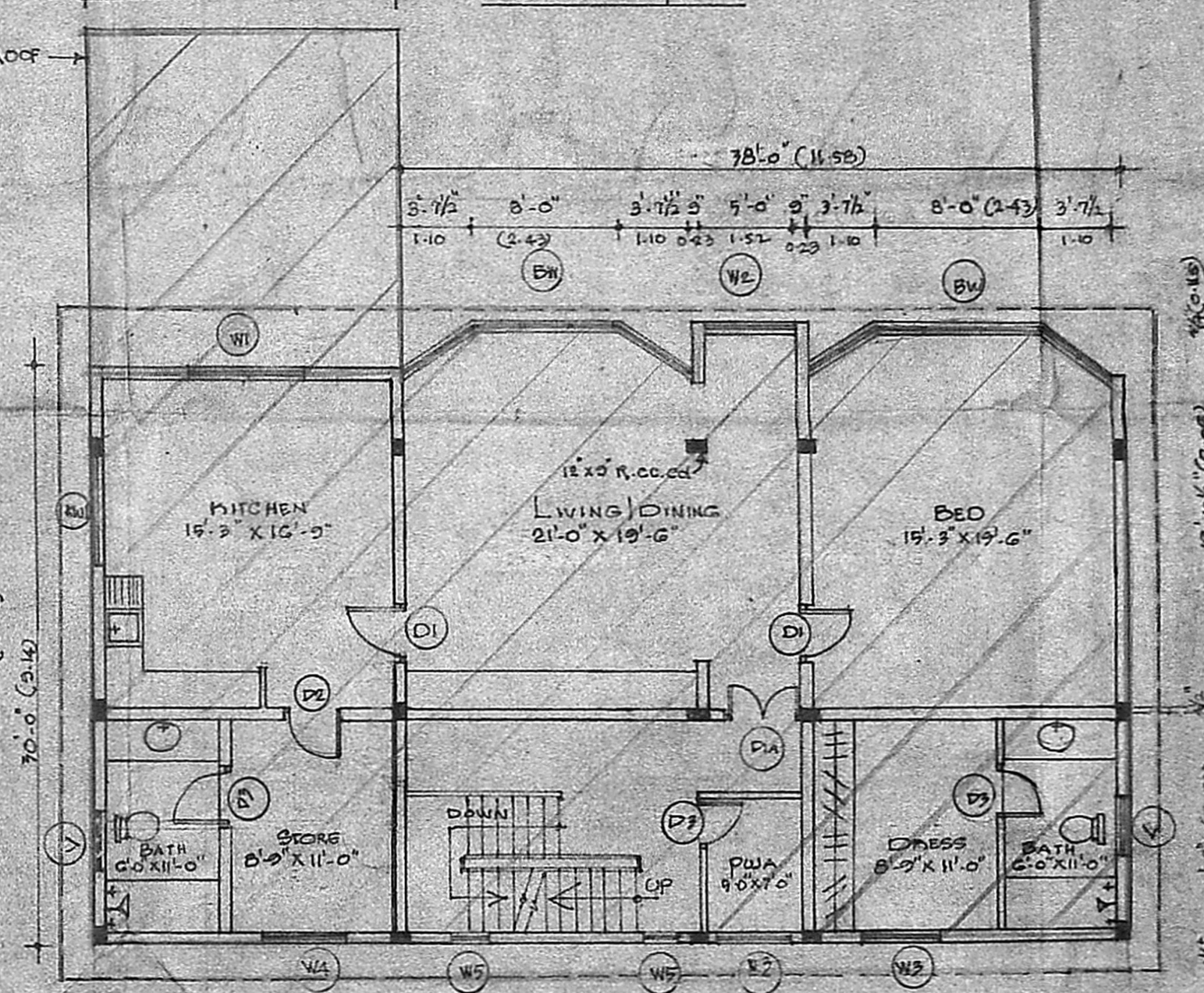
TERACE PLAN



GROUND FLOOR PLAN



FIRST FLOOR PLAN



SECOND FLOOR PLAN

B/9803/75/90
Planning Permit No.
APPROVED
Subject to the conditions of this office.
**FOR MEMBER SECRETARY
MADRAS METROPOLITAN
DEVELOPMENT AUTHORITY**

- SPECIFICATION**
- FOUNDATION CONC. 1:4:8 MIX
 - R.C.C. 1:2:4 MIX IN ALL R.C.C. ITEMS
 - WALL PLASTERING WITH 1.5 CM
 - CEILING PLASTERING IN CM 1:3
 - 1/2" BK WORK IN CM 1:3
 - BACK WORK IN CM 1:4
 - 1/2" THK TERRAZZO MOSAIC FLOORING OVER BRICK JELLY LEVELLING COURSE
 - 2 LAYERS FLAT PRESSED TILES OVER D.J. LEVELLING COURSE OVER 1/2" CEMENT MORTAR 1:3 MIXED WITH CRUDE OIL.
 - ALL PAINTINGS AND COLOUR WASH PRE-PREMIER + 2 COATS

- SCHEDULE OF JOINERY**
- ED T.W. PANELED DOOR (2 LEAVES) 9'-0" X 7'-0"
 - DO DO DO DO DO DO 6'-0" X 7'-0"
 - DI1 T.W. SINGLE PANELED DOOR 6'-3" X 7'-0"
 - DI2 T.W. DO DO DO DO DO DO 3'-0" X 7'-0"
 - DI3 T.W. FLUSH DOOR 3'-3" X 7'-0"
 - DI4 T.W. PANELED DOOR 2'-0" X 7'-0"
 - DI5 T.W. DOOR 3'-0" X 7'-0"
 - DI6 T.W. PANELED DOOR (2 LEAVES) 4'-0" X 7'-0"
 - DI7 WELD MESH DOOR 3'-0" X 7'-0"
 - DI8 DO DO DO DO VENT. ABOVE 3'-0" X 7'-0"
 - DI9 T.W. GLAZED WINDOW 7'-0" X 4'-6"
 - DI10 DO DO DO DO DO DO 6'-0" X 4'-6"
 - DI11 T.W. GLAZED BAY WINDOW 15'-3" X 4'-6"
 - DI12 T.W. DO WINDOW 5'-0" X 4'-6"
 - DI13 T.W. DO WINDOW 3'-6" X 3'-0"
 - DI14 T.W. DO WINDOW 4'-0" X 4'-6"
 - DI15 T.W. DO WINDOW 2'-0" X 7'-0"
 - DI16 T.W. FRENCH WINDOW 10'-0" X 7'-0"
 - DI17 T.W. FLUSH DOOR 3'-0" X 7'-6"
 - DI18 T.W. GLAZED VENTILATION 3'-6" X 1'-0"
 - DI19 T.W. GLAZED WINDOW 7'-0" X 3'-6"
 - DI20 DO DO DO DO DO DO 5'-0" X 3'-6"

REFERENCE

PROPOSAL	=====
EXISTING	=====
ROADS	=====
BOUNDARY	=====
DEMOLITION	=====

AREA STATEMENT

GROUND FLOOR	2003 SFT
FIRST FLOOR	2003 SFT
SECOND FLOOR	1773 SFT
TOTAL	5779

1-12-89	CORRECTED	
DATE	REVISION	SIGNATURE
		Kamala Pk

SIGNATURE OF OWNER
PROPOSED ADDITION/ALTERATION TO EXISTING BLDG IN RS NO 83 PART OF NUNGAMBAKKAM NO. 26 ANDERSON ROAD MADRAS 60 DIVISION NO. 71

DWG NO. :- AR - 01 SHEET NO. 1.

DATE :- 2-5-89

SCALE :- 1" = 8'-0" (1:100)

ARCHITECTS

METRO CONSULTANTS
NO 62, C.P. RAMASWAMY ROAD
ALNEP PET MADRAS 16